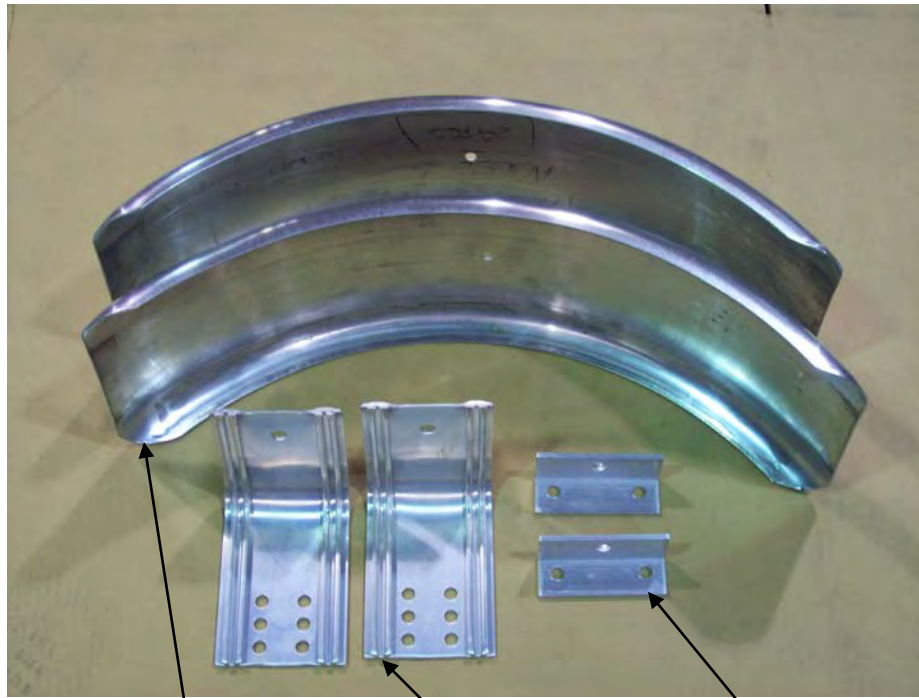
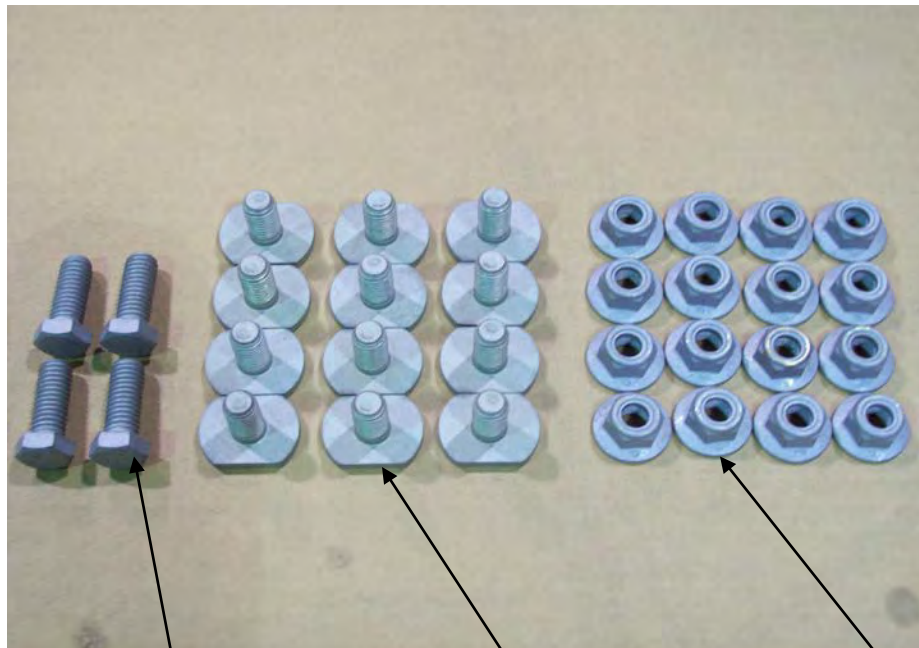


# #22-001 ALUMINUM FENDER KIT FOR SUT TRAILERS

UNPACK AND IDENTIFY THE FOLLOWING PARTS.



2) Fenders — 2) Fender braces — 2) Angle brackets —



4) 1" Bolts — 12) 3/4" T-bolts — 16) Nuts —



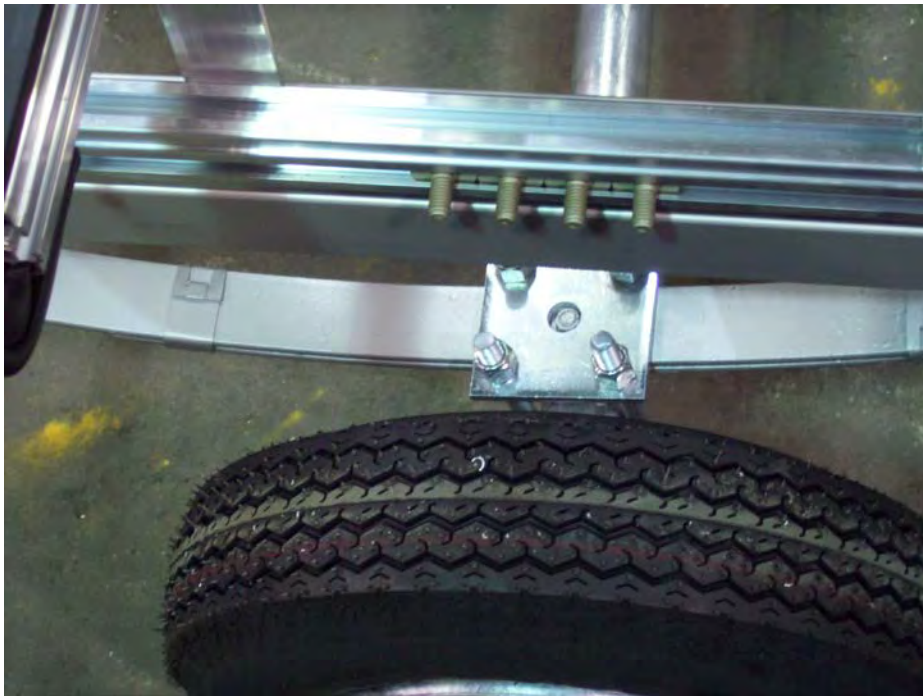
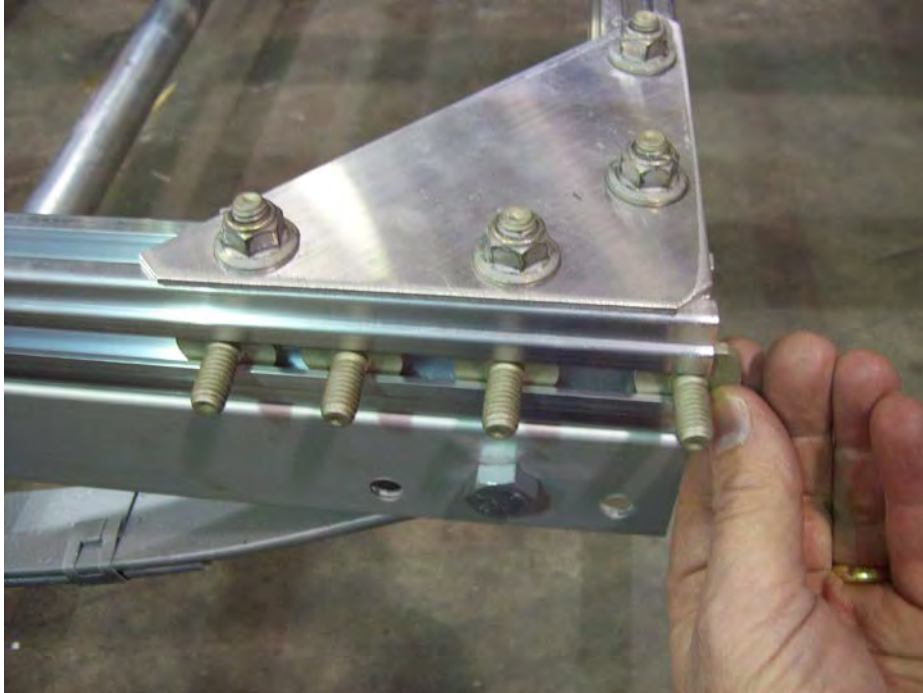
2) Small washers

4) Rubber washers

6) Large washers



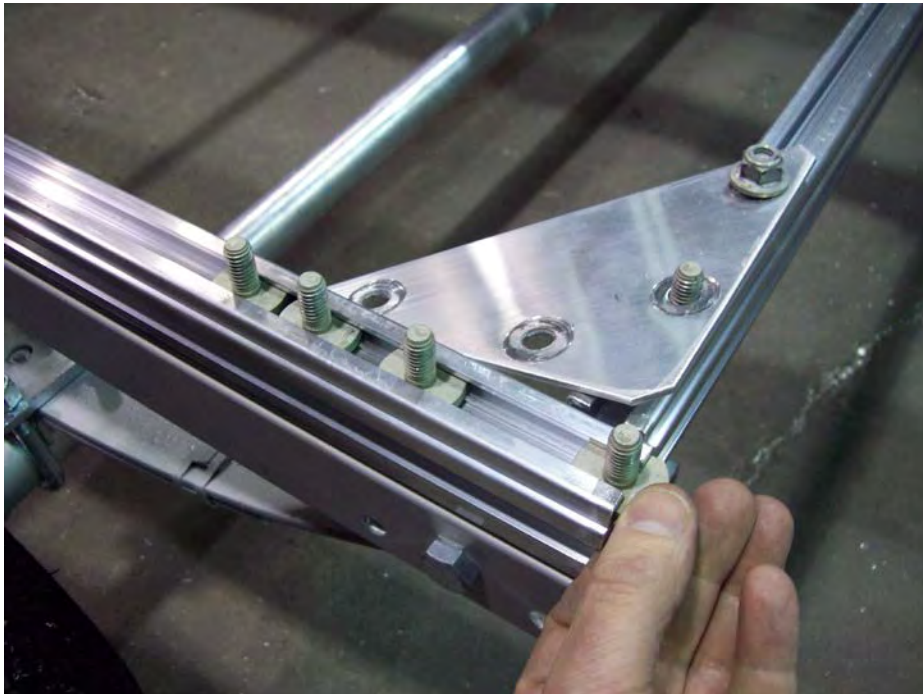
Remove plastic fenders and hardware from trailer.



Insert four T-bolts into the side rail and center them above the axle.



Remove the nuts from the triangle plate



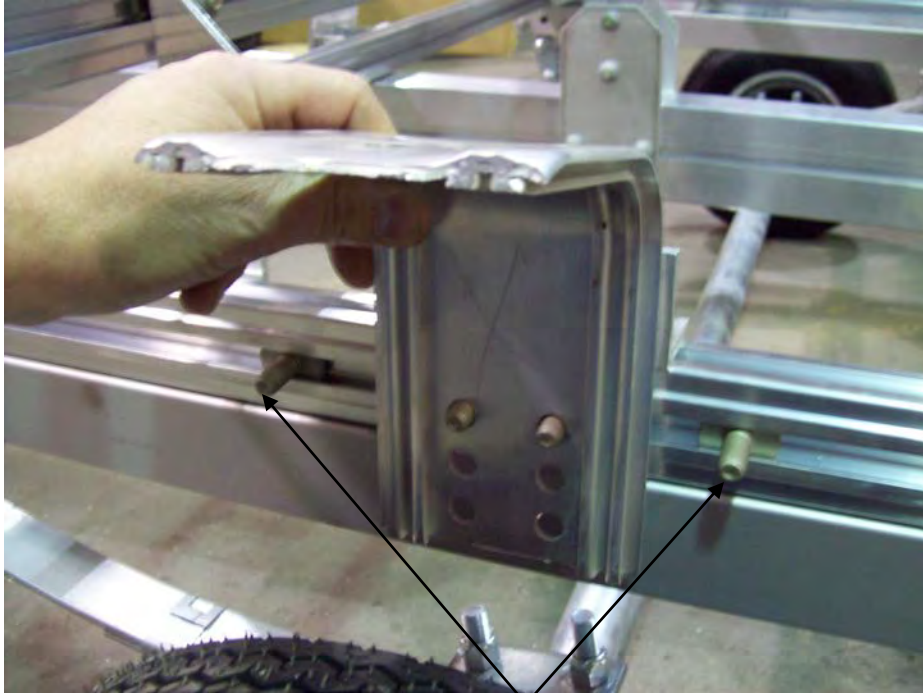
Insert two T-bolts in the top of the rail as shown. Slide two T-bolts over and position them in the center of the rail. At this point reinstall the triangle plate and tighten nuts.



Install angle bracket over the two T-bolts as shown.



Install nuts finger tight at this point. Center angle bracket over top of the axle.



**T-bolts**

Install fender brace on the two inner T-bolts. Also, most of the SUT trailers will only use the upper holes in the brace. Make sure you have a T-bolt on each side of the fender brace.



Install nuts finger tight on the brace.



Locate the fender, bolt, small washer, and nut.



Center the large and small washer with the hole on top of the fender.



Align the center hole of the fender with the hole in the brace. Insert bolt through washers, fender and bracket.



Install nut on the underside of the fender.





Align fender with side rail and tighten nut.



Once fender has been tightened up, center it over top of the wheel.



Tighten the nuts on the fender brace.



Align the fender bracket with the outside edges of the fender brace. Tighten nuts.



Locate 2) nuts 2) large washers and 2) rubber washers.



Slide T-bolts over to the inside edge of the fender on both sides. First install the rubber washers then the large steel washers and nuts. Slide washers against the fender and tighten.



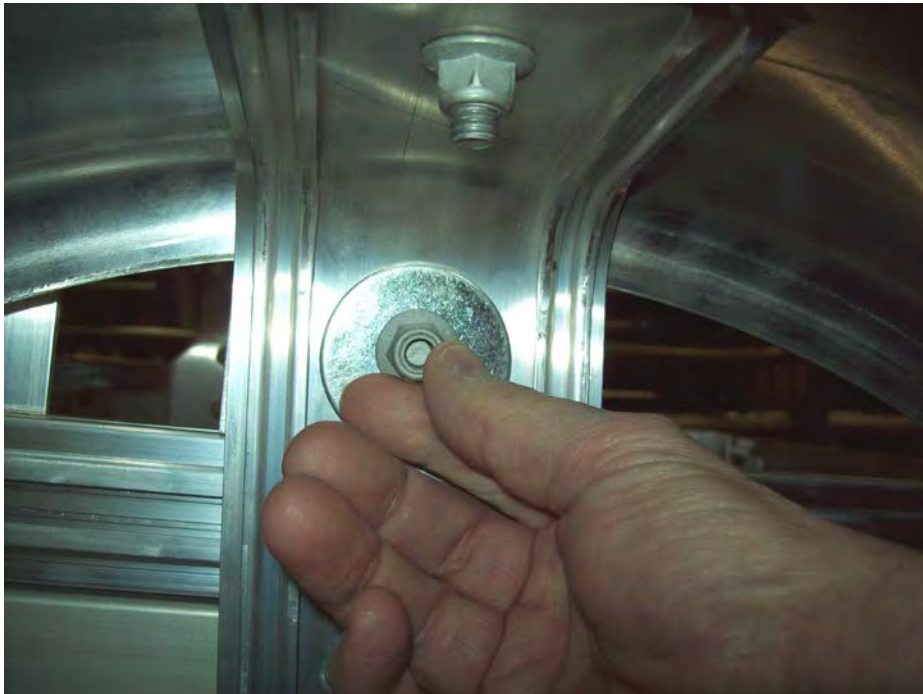
Insert a 3/8" drill bit in the back side of the angle bracket and drill through the fender brace.



Locate the nut, large washer, and 1" bolt.



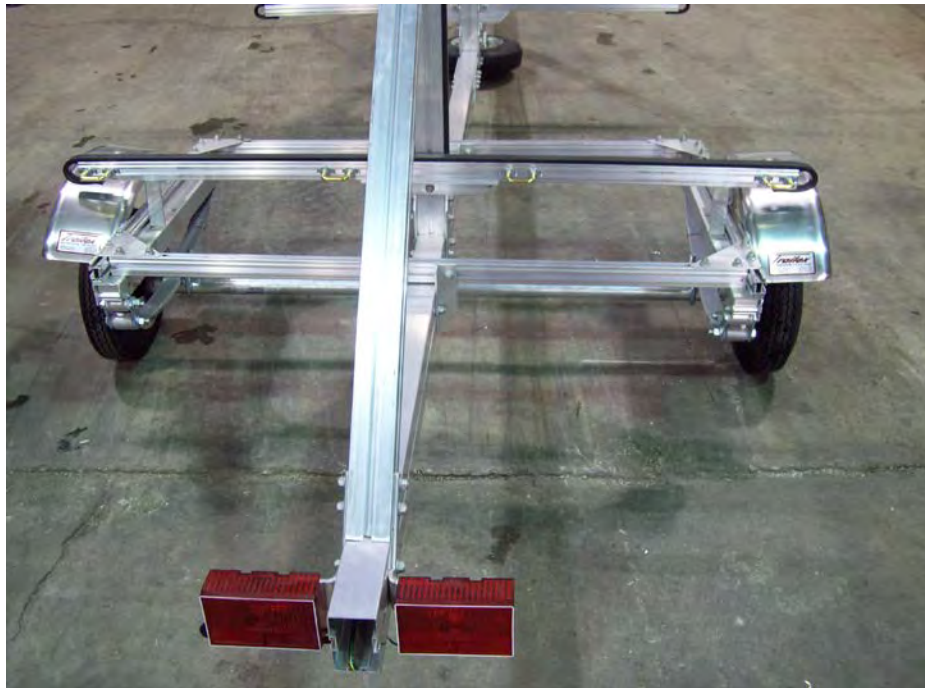
Insert bolt through the back side of the angle bracket.



Install the washer and nut.



Tighten nut and bolt at this point. Repeat the process for the other side.



KJM 2/21/13

Finished fender kit.